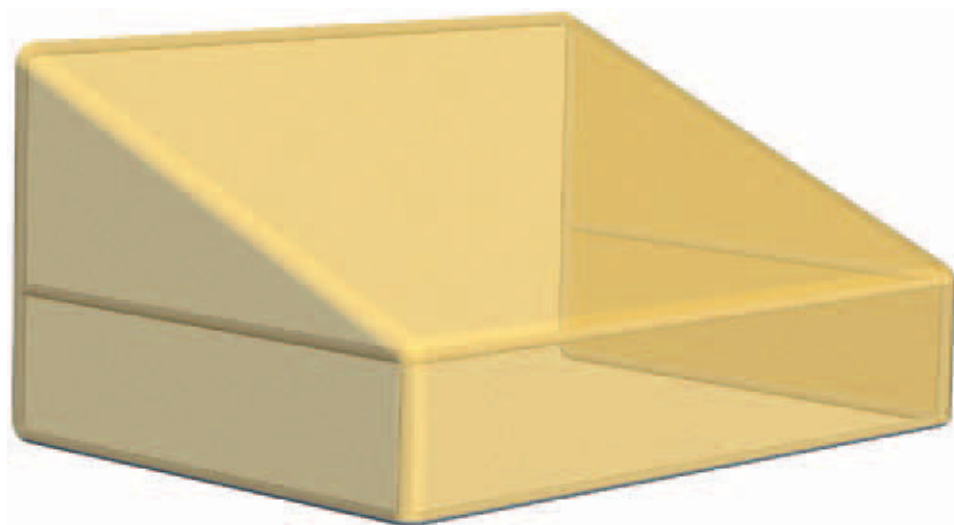
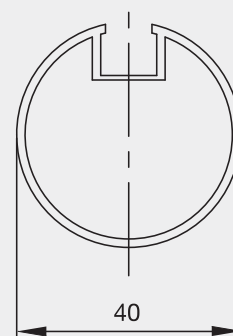
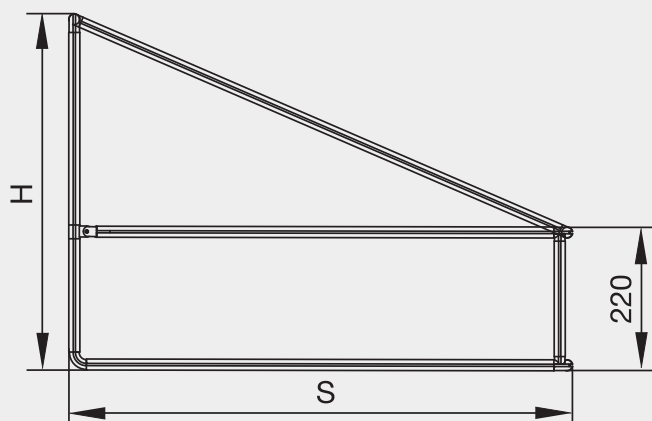


# CAPOTTINA TEOREMA

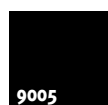


Struttura in tubolare di lega d'alluminio D.40 di tipo fisso con componenti e articolazioni fuse in lega di alluminio. Particolarmente indicate per ingressi e per l'arredo urbano. Verniciatura con polveri poliestere eseguita presso il nostro stabilimento seguendo rigidi standard qualitativi.

*Bended tubular D. 40 mm. aluminium fixed structure with casted components and joints in aluminium alloy. Particularly ideal for entrances and for urban constructions. Painting by polyester powder in our factory performed following rigid qualitative standards.*



**Standard**



**Optional**

